

**RM CORE**

TYPE	FIG.	Dimensions(mm)						
		A	B	C	D	E	F	H
RM5	1	14.3±0.3	5.2±0.15	6.6±0.2	4.8±0.1	10.4±0.3	3.25±0.2	12.05±0.25
RM6	1	17.6±0.4	6.2±0.15	8.0±0.2	6.3±0.1	12.65±0.25	4.1±0.15	14.4±0.3
RM8A	1	22.75±0.45	6.25±0.25	10.8±0.25	8.0±0.3	17.3±0.45	3.5±0.4	19.35±0.5
RM8	1	22.75±0.45	8.2±0.15	10.8±0.2	8.4±0.15	17.3±0.3	5.5±0.15	19.3±0.4
RM10A	1	27.85±0.65	6.0±0.2	13.25±0.25	10.7±0.2	21.65±0.5	3.1±0.2	24.15±0.55
RM10	1	27.85±0.65	9.3±0.15	13.25±0.25	10.7±0.3	21.65±0.45	6.35±0.3	24.15±0.55
RM12	1	37.6+0/-1.5	12.25±0.15	16.1+0/-0.5	12.8+0/-0.4	24.9+1.1/-0	8.55±0.2	29.8+0/-1.2
RM14	1	41.6±0.6	15.1±0.15	18.7±0.3	14.75±0.25	29.5±0.5	10.8±0.15	34.2±0.5

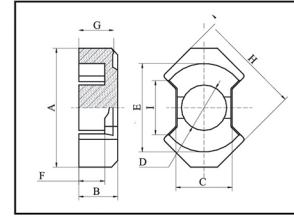
**RM CORE**

FIG.1

Cl	Ae	Le	Ve	AL±25%(nH/N²)						Weight g/PRS
				FW40	FW44	FW95	FW5K	FW7K	FW10K	
0.93	23.80	22.10	525.98	1920	2000	2050	3000	3500	4500min	3.00
0.781	36.60	28.60	1050.00	2300	2450	2800	4100	4800	6000min	5.50
0.51	63.90	32.00	1647.00	3250	3400					8.50
0.59	64.00	38.00	2400.00	3160	3300		6000	7200	8400min	13.80
0.35	98.10	38.70	3081.60	5000	5150					15.50
0.45	98.00	44.00	4310.00	3630			8000	9700	11000min	24.00
0.44	194.28	74.89	14549.60	5400	5500	6680				45.00
0.40	178.00	75.38	12600.00	5500	5600	7200	13000	16000	17500min	70.00